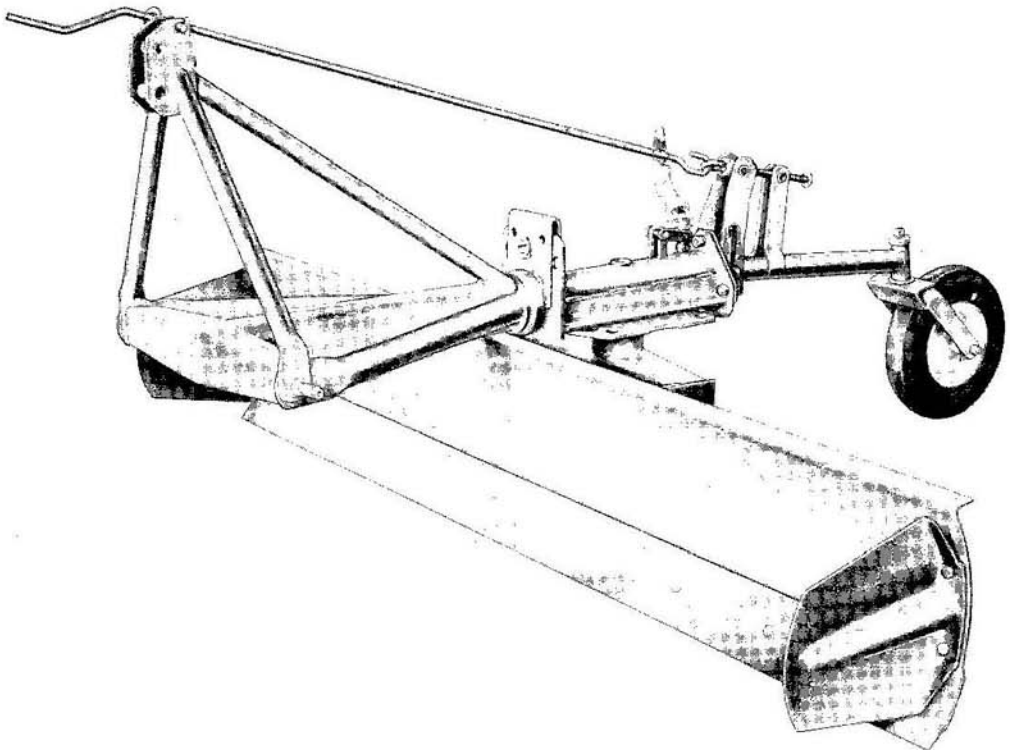


Ford

**HEAVY DUTY
ADJUSTABLE BLADE**

SERIES 716

PARTS BOOK



MAY, 1960

TRACTOR AND IMPLEMENT DIVISION

Ford Motor Company,

2500 East Maple Road • Birmingham, Michigan

MODEL INDEX

<u>Model No.</u>	<u>Description</u>	<u>Group No.</u>
19-186	Frame, Heavy Duty Blade	1-1
19-187	Blade, 6Ft Heavy Duty Adjustable	1-2
19-188	Blade, 8Ft Heavy Duty Adjustable	1-2
19-189	Gauge Wheel Attachment	1-3
190033	Skid Shoe and Bracket Assembly	1-2
193588	Plate, Side	1-2
193772	Edge, Ditching	1-2

GROUP INDEX

<u>Group No.</u>	<u>Description</u>	<u>Page No.</u>
1-1	Frame Assembly	3
1-2	Blades and Accessories	4,5
1-3	Gauge Wheel Attachment	6,7

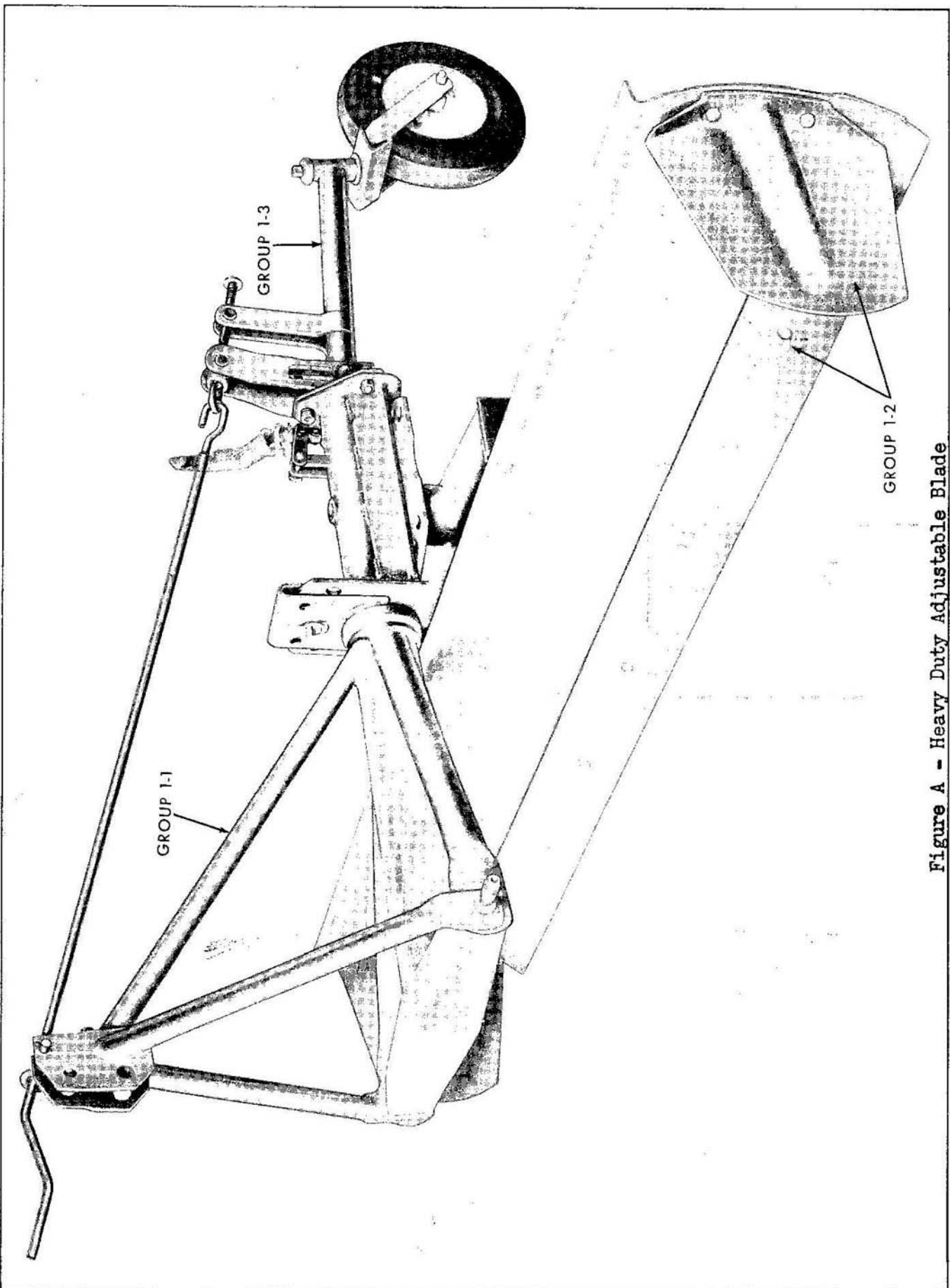


Figure A - Heavy Duty Adjustable Blade

Blade

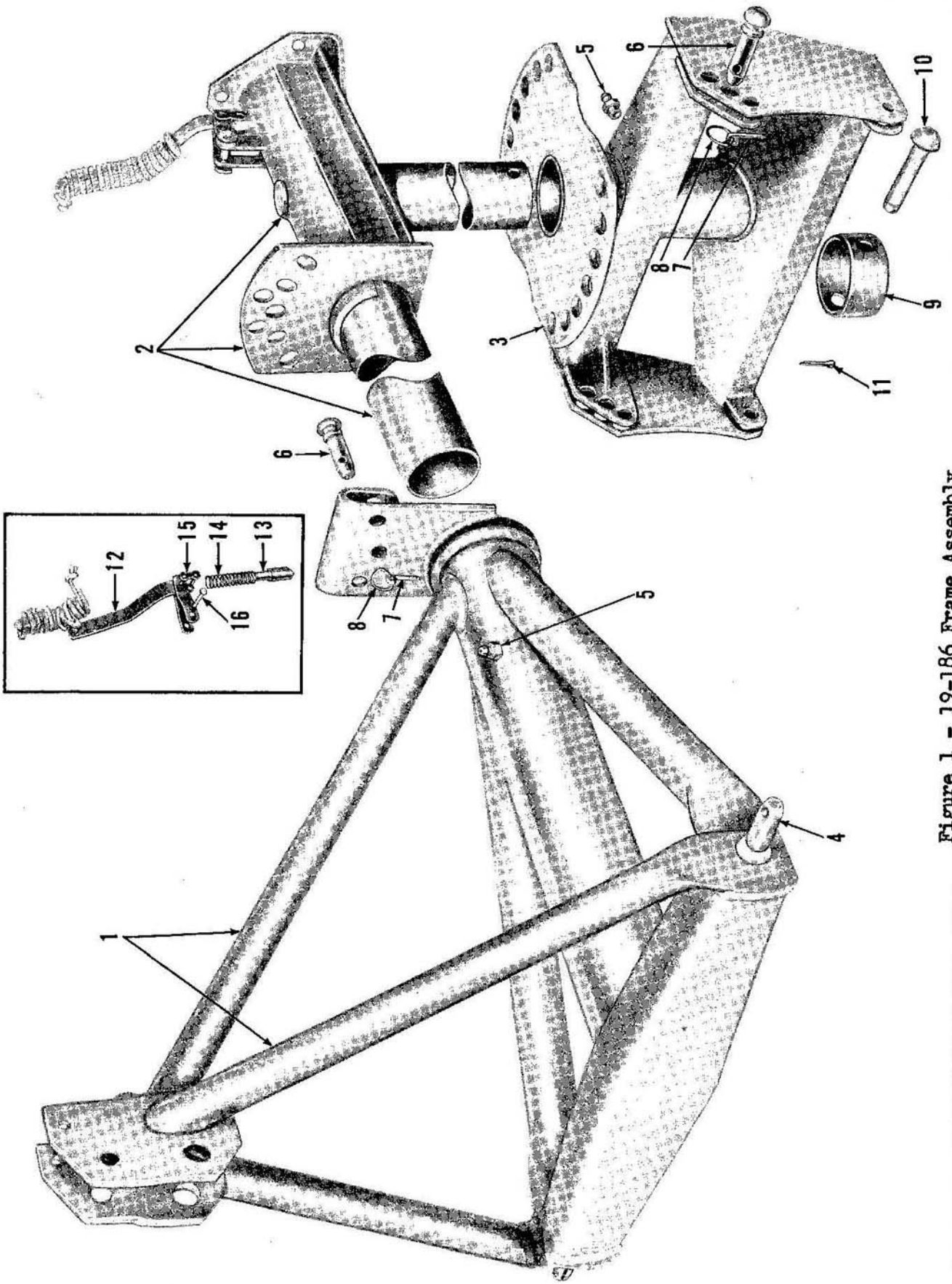


Figure 1 - 19-186 Frame Assembly

Blade

FIG.	PART NO.	NAME AND DESCRIPTION	QTY. REQ.
1		<u>GROUP 1-1 19-186 FRAME ASSEMBLY, HEAVY DUTY ADJUSTABLE BLADE</u>	19-186
1	193610	FRAME, Rear Blade (Welded Assembly)	1
2	193769	TUBE, Turntable (Welded Assembly)	1
3	193770	SLEEVE, Turntable (Welded Assembly)	1
-	104434	PIN, Link (Use W/FMD Tractors)	2
4	109741	PIN, Link)	2
-	34814-S7	LOCKWASHER, 7/8) Pin to Frame	2
-	34677-S8	NUT, 7/8 - 14 Hex)	2
5	87907-S8	FITTING, Lube, 1/4 - 28 x 1/2 Str Frame & Sleeve . . .	2
6	193618	PIN, Link)	5
7	2N-574	PIN, Linch) Frame to Tube Pitch Adjusting	5
8	2N-575	RING, Linch Pin)	5
9	193624	COLLAR, Thrust	1
10	194184	PIN, 1 x 5.12 Clevis)	1
11	72075-S8	COTTER PIN, 1/4 x 1-1/2) Sleeve Retaining	1
12	195241	LIFTER, Pin	1
13	195239	PIN, Lifter	1
14	195237	SPRING, Lifter	1
15	164127	LINK ASSEMBLY, 1" Pitch, #80 Chain	1
16	74049-S	PIN, 3/8 x 2-1/8 x 2-1/4 Clevis	1
--	44726-S8	WASHER, 3/8 Flat	1
--	72016-S8	COTTER PIN, 3/32 x 3/4	1
--	305236	DECAL, Ford	1

Blade

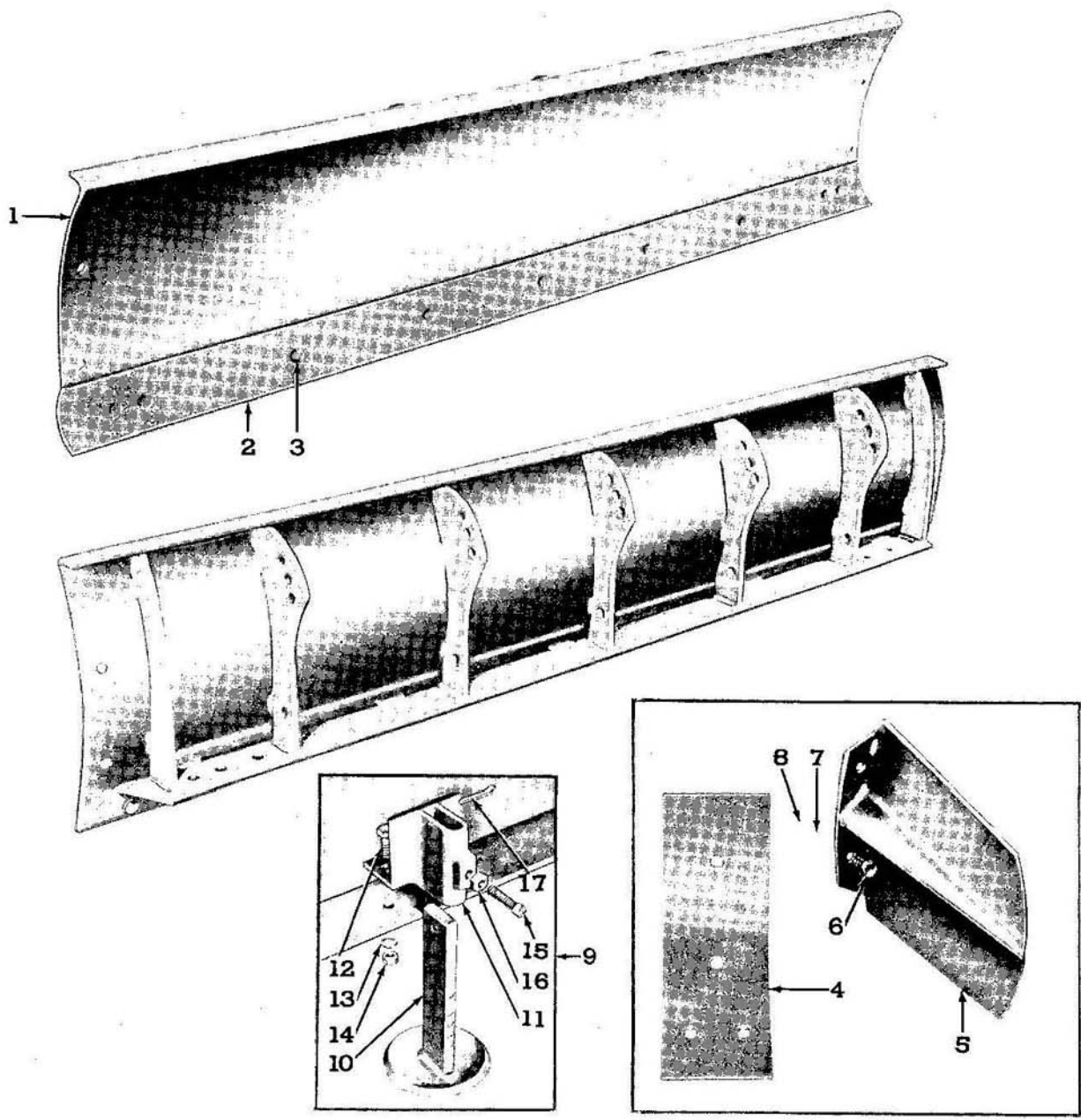


Figure 2 - Blade Assembly

FIG.	PART NO.	NAME AND DESCRIPTION	QTY. REQ.	
2	GROUP 1-2	(19-187 BLADE, 6FT HEAVY DUTY ADJUSTABLE 19-188 BLADE, 8FT HEAVY DUTY ADJUSTABLE)	19-187	19-188
1		PLATE, Pitch (Not Serviced)	5	7
2	193614	LIP, Cutting, 6Ft	1	
-	193615	LIP, Cutting, 8Ft		1
3	303686-S8	BOLT, 1/2 - 13 x 1-3/4 Flow)	8	10
-	34809-S7	LOCKWASHER, 1/2) Lip to Blade	8	10
-	33845-S8	NUT, 1/2 - 13 Hex)	8	10

Blade

FIG.	PART NO.	NAME AND DESCRIPTION	QTY. REQ.	
2			19-187	19-188
	GROUP 1-2	(19-187 BLADE, 6FT HEAVY DUTY ADJUSTABLE (Cont'd) (19-188 BLADE, 8FT HEAVY DUTY ADJUSTABLE		
		<u>Extra Equipment</u>		
4	193772	EDGE, Ditching	2	2
-	303674-S8	BOLT, 1/2 - 13 x 1-1/2 Plow)	4	4
-	303710-S8	BOLT, 1/2 - 13 x 2-1/4 Plow)	4	4
-	34809-S7	LOCKWASHER, 1/2) Edge to Blade	8	8
-	33845-S8	NUT, 1/2 - 13 Hex)	8	8
5	193588	PLATE, Side	2	2
6	20432-S8	BOLT, 1/2 - 13 x 1-1/4 Hex)	4	4
7	34809-S7	LOCKWASHER, 1/2) Plate to Blade	4	4
8	33845-S8	NUT, 1/2 - 13 Hex)	4	4
9	190033	SHOE & BRACKET ASSEMBLY, Skid	2	2
		Consists of:		
10	190034	SHOE, Skid	2	2
11	190062	BRACKET, Mounting	2	2
12	20473-S8	BOLT, 1/2 - 20 x 1-1/2 Hex Hd)	4	4
13	34809-S7	LOCKWASHER, 1/2) Bracket	4	4
14	33846-S8	NUT, 1/2 - 20 Hex) to Blade	4	4
15	91476-S8	SET SCREW, 1/2 - 13 x 1-1/2 Sq Hd) Bracket	2	2
16	33942-S8	NUT, 1/2 - 13 Hex) to Shoe	2	2
17	72039-S8	COTTER PIN, 1/4 x 1 - Shoe to Bracket	2	2

Blade

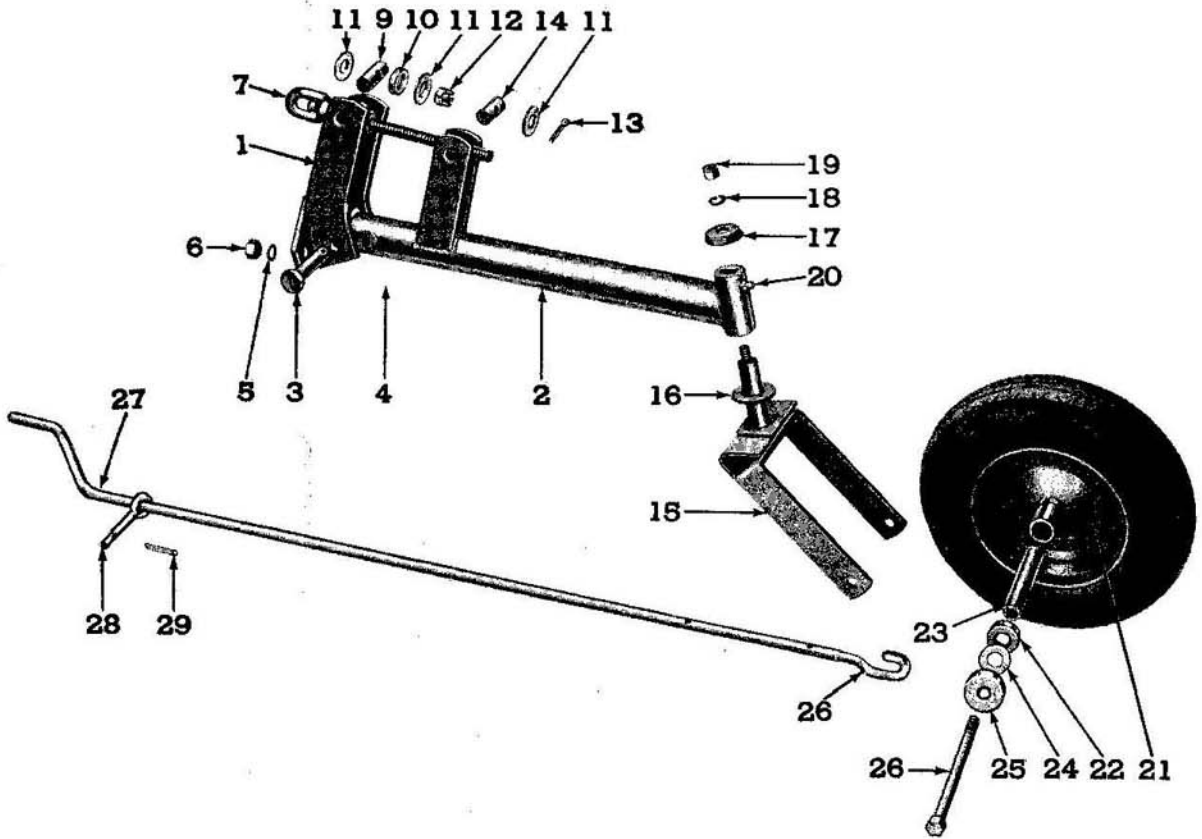


Figure 3 - Gauge Wheel Attachment

FIG.	PART NO.	NAME AND DESCRIPTION	QTY. REQ.
3			19-189
<u>GROUP 1-3 GAUGE WHEEL ATTACHMENT, MODEL 19-189</u>			
1	195232	BRACKET, Gauge Wheel (Welded Assembly)	1
2	194596	ARM, Gauge Wheel (Welded Assembly)	1
3	106486	PIN, 7/8 x 4 - Rivet, Button Hd Drld) COTTER PIN, 1/4 x 1-1/2) Bracket to Arm	1
-	72075-S8		
4	45740-S8	BOLT, 5/8 - 11 x 1-1/2 Hex Hd) LOCKWASHER, 5/8) NUT, 5/8 - 11 Hex) Bracket to Tube . . .	3
5	34811-S7		
6	33849-S8		

Blade

FIG.	PART NO.	NAME AND DESCRIPTION	QTY. REQ.
3		<u>GROUP 1-3 GAUGE WHEEL ATTACHMENT, MODEL 19-189 (Cont'd)</u>	19-189
7	194590	SCREW, Gauge Wheel (Welded Assembly)	1
-	194588	SPACER, Gauge Screw	1
9	194581	PIN, Gauge Screw Pivot	1
10	194671	BEARING, Gauge Screw	1
11	44746-S8	WASHER, 3/4 Flat	3
12	45301-S	NUT, 3/4 - 10 Hex, Slotted	1
13	72053-S8	COTTER PIN, 1/8 x 1-1/4	2
14	194587	PIN, Arm Adjusting	1
15	220976	FORK, Gauge Wheel (Welded Assembly)	1
16	354772-S	WASHER, 1-1/4 Flat	1
17	220717	CAP, Dust	1
18	34811-S7	LOCKWASHER, 5/8)	
19	33849-S8	NUT, 5/8 - 11 Hex) Fork to Arm	1
20	87901-S8	FITTING, Lube, 1/8 - 27 x 3/4 Str Arm	1
21	107846	WHEEL ASSEMBLY, Gauge	1
		Consists of Wheel plus:	
22	107849	BEARING, Wheel	2
23	144949	SPACER, .687 x 1 x 6-1/16 Tube	1
24	147075	WASHER, Hub	2
25	147077	CAP, Hub	2
26	302924-S8	BOLT, 5/8 - 11 x 8 Hex Hd)	
--	34811-S7	LOCKWASHER, 5/8) Wheel to Fork	1
--	33849-S8	NUT, 5/8 - 11 Hex)	
--	87932-S8	FITTING, Lube, 3/16 x 9/16 Drive - Hub	1
26A	196595	HOOK, Crank	1
27	196596	CRANK, Gauge Screw	1
--	73902-S8	PIN, 3/16 x 1 Clevis)	
--	72003-S8	COTTER PIN, 1/16 x 3/8) Crank to Hook	2
28	196594	PIN, Eye	1
29	72035-S8	COTTER PIN, 1/8 x 1 - Pin	1

Blade

NUMERICAL INDEX

2N-574	Pin	3	193772	Edge	5
2N-575	Ring	3	194184	Pin	3
104434	Pin	3	194581	Pin	7
106486	Pin	6	194587	Pin	7
107846	Wheel	7	194588	Spacer	7
107849	Bearing	7	194590	Screw	7
109741	Pin	3	194596	Arm	6
114949	Spacer	7	194671	Bearing	7
117075	Washer	7	195232	Bracket	6
117077	Cap	7	195237	Spring	3
164127	Link	3	195239	Pin	3
190033	Shoe & Bracket	5	195241	Lifter	3
190034	Shoe	5	196594	Pin	7
190062	Bracket	5	196595	Hook	7
193588	Plate	5	196596	Crank	7
193610	Frame	3	220717	Cap	7
193614	Lip	4	220976	Fork	7
193615	Lip	4	302924-S8	Bolt	7
193618	Pin	3	303674-S8	Bolt	5
193624	Collar	3	303686-S8	Bolt	4
193769	Tube	3	303710-S8	Bolt	5
193770	Sleeve	3	354772-S	Washer	7

DECAL

305236 Decal 3

THERE IS NO SUBSTITUTE FOR THE GENUINE

Inferior or non-genuine parts can prove to be a hazardous and costly investment for both the dealer and his customer. Top operating performance of Ford Tractors and Equipment can only be maintained through continued use of genuine Ford Tractor and Equipment parts. The use of non-genuine parts often results in short life and higher cost in the long run.

Every genuine Ford part you sell has been designed, tested, manufactured, inspected and is guaranteed to be an exact replacement part. Further, each part bears the Ford name -- a name known and respected everywhere for top quality and integrity.

It's just good business to offer your customers the best.

Sell Ford and Ford will help you sell!